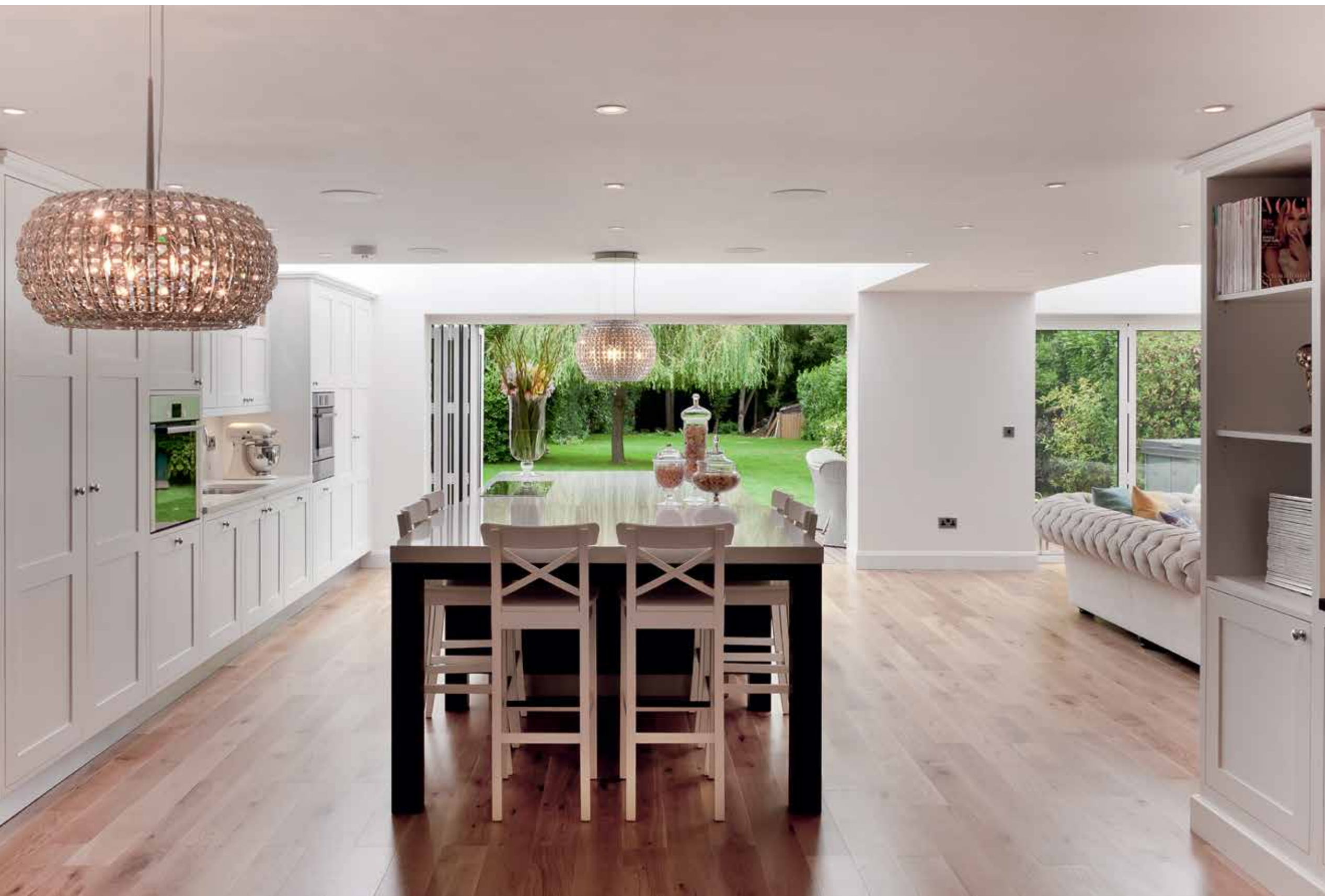




SIGN OF THE
times

The stunning results of this super-spacious kitchen renovation prove that some things really are worth waiting for

Report: **Felicity Borthwick** Photography: **Mia Lind and Lindy Cumings**



Opening pages (p122-123): “We might have rethought the sloping glass roof if we had realised how hot it was going to get in summer,” owner Lizzie Hayman admits. “We have since installed these sail blinds and they have completely done the trick. We can still see the roof and get that feeling of light, but there is extra shade when it’s really sunny.”

Left: “The house we were renting before had an island, but it wasn’t big enough and didn’t have any seating, so an important part of our brief was that the island incorporate a large seating area where guests can sit and the children can have their breakfast,” explains Lizzie.

Lizzie and Rob Hayman had been looking for a house for a long time – about three years – before they finally found this detached property in West Sussex. “We wanted to wait until we had found our dream home, something we could expand and do up, so we decided to rent locally until we found one that ticked all our boxes,” Lizzie elaborates. “There were a couple we liked that fell through, but we eventually came across this property – it wasn’t really our style as it’s quite newly built, but space-wise it had so much potential to extend up and out, and the location was great.”

The search for a kitchen designer, which followed, also proved somewhat challenging. Having added on a large rear extension and brought the utility room into the kitchen, the couple now had a generous space to work with but, unfortunately, not a generous enough budget for many of the companies they approached, with quotes coming in at around the £90-£100,000 mark.

The main factor increasing the costs was that the Haymans wanted three distinct yet coordinating areas – a kitchen zone with a large island, a utility area to conceal all the laundry appliances, electrics and boiler, and a large ‘dresser run’ with open shelving and useful storage. However, just when they were beginning to think that perhaps they couldn’t afford to have all three areas in the same style, they came across a magazine advertisement for Sola Kitchens.

“I had never thought about having a black-and-white kitchen; I was more drawn to mahogany and white, but then I saw Sola’s ad for this exact kitchen and thought how well it worked,” Lizzie recalls. “I contacted Sola and not only did one of the designers, Pia Rosling, come down and see us straight away, despite the fact we’re in West Sussex and Sola is based in Fulham, but she was willing to work within our budget. What’s more, her design was one of the best we’d seen,” she adds.

“Pia came up with the idea of having these tall units along the back wall to house all the laundry appliances and electrics and stuff we didn’t want to see, and then a beautiful matching dresser along the adjacent wall, which creates a nice link with the living area around the corner. She has also given us a massive island with a generous seating area, which was very important to us as we entertain a lot.”

Right: The couple weren't planning on buying new sofas for the living area, but when they saw these cream designs in Furniture Village they knew they would look much better alongside the black-and-white kitchen than their existing brown leather ones.

Opposite page, top left: Lizzie found this metal ampersand sign on Amazon and thought it would work well with the launderette sign in livening up stark patches of wall.

Top right: Tall drawers maximise storage space and make their contents more accessible than low-level cupboards.

Middle left: "I hadn't considered a black-and-white kitchen until I saw the Sola ad, but now we have based the whole interior around this scheme and instead get colour from flowers and various accessories," says Lizzie.



"An important part of our brief was that the island incorporate a large seating area where guests can sit and the children can have their breakfast."

Indeed the island, which has been hand-painted black and topped with a luxurious white composite stone, makes a beautiful focal point and can comfortably seat up to six people. This allows guests to relax in the kitchen while Lizzie cooks at the induction hob, safely positioned at the other end of the island, nearer the garden. The island also comprises an undercounter wine storage unit and copious amounts of storage.

Space has been maximised on the opposing wall with floor-to-ceiling units encompassing a sink with chilled and sparkling water tap and an array of appliances from Bosch. "The only thing I knew I really wanted when it came to appliances was the Elica extractor and an induction hob, so I took my cue from Pia who recommended Bosch," says Lizzie. "She also suggested getting a steam oven rather than a microwave, which we did. I didn't actually use it until Christmas day because I was too scared, but it's absolutely brilliant," she admits.

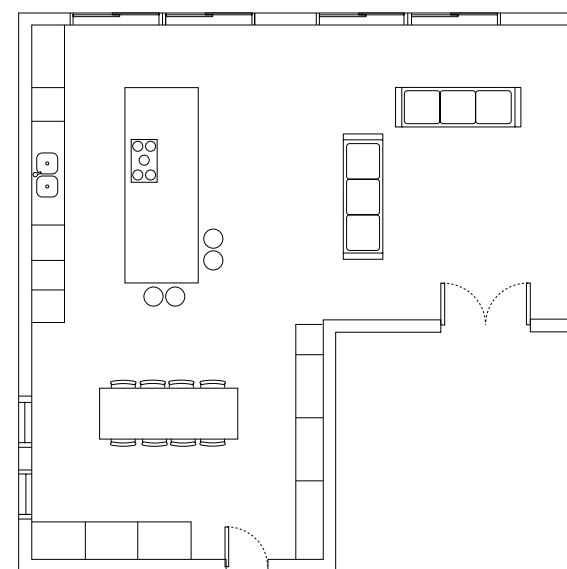
The cabinetry boasts some lovely design features, such as the in-frame detailing and glass panelling, which brings a decorative element to the space and helps tie the three zones together. Of course, the furniture and décor that Lizzie and Rob picked out for the surrounding areas also make this room the beautiful space that it is today, from the upholstered Ikea dining chairs to the colourful John Lewis cushions and the eye-catching 'Launderette' sign suspended on the wall.

"The inspiration for this sign came from seeing Liam Neeson's character's beautiful kitchen in the film *Love Actually*," laughs Lizzie. "He had a big launderette sign up like this and I thought it looked great – it's so much nicer than just having stark walls. I love this room now and wouldn't change a thing," she adds. "When the project was under way and the house was a mess I just kept trying to visualise how it would all look in the end and it has totally exceeded my expectations!" [KBB](#)

Below: This elegant run of units has been designed more like a dresser, allowing the couple to display books and photo frames and giving the kitchen a more lived-in, personal feel. It also creates a nice transition between the kitchen and living areas.

Opposite page: The Elica Celestial extractor adds a touch of glamour to the cooking area and also complements the John Lewis light suspended above the dining table.





Below: "Lizzie and Rob are a very sociable couple so they wanted the hob on the island and a wine storage unit facing the living area," recalls kitchen designer Pia Rosling.

Opposite page: "We suggested including glass panelling in some of the cabinetry to create a nice, decorative detail," explains Pia.



Below: These pretty upholstered dining chairs from Ikea inject colour and softness into the clean, streamlined space, whilst bi-folding glass doors at the end of the room allow views of the verdant garden to spill through.



SourceBook

DESIGN

Design Pia Rosling of Sola Kitchens (020 3004 0898 or www.solakitchens.com)

KITCHEN

Cabinetry Hand-painted timber from the Frillen range, Sola Kitchens, as before

Worktop Composite Gemini Quartz in English White, Sola Kitchens, as before

Flooring Oak. For similar try Wood and Beyond (020 8209 2662 or www.woodandbeyond.com)

Appliances Fridge and freezer, AEG (0844 561 1611 or www.aeg.co.uk); Oven, steam combination oven, warming drawer and induction hob, Bosch (0844 892 8979 or www.bosch-home.co.uk); Dishwasher and wine storage unit, Miele (0845 365 6600 or www.miele.co.uk)

Sink Blanco (0844 912 0100 or www.blanco.co.uk)

Taps Boiling-water tap, Quooker (0808 115 2442 or www.quooker.co.uk); Chilled and sparkling water tap, Grohe (0871 200 3414 or www.grohe.com/uk)

Extractor Celestial extractor, Elica (01252 351111 or www.elica.co.uk)

Barstools, dining table and chairs Ikea (020 3645 0000 or www.ikea.com/gb)

Sofas Furniture Village (0800 804 8879 or www.furniturevillage.co.uk)

Cushions and light John Lewis (0845 604 9049 or www.johnlewis.com)

Signs Launderette sign from Not On The High Street (0845 259 1359 or www.notonthehighstreet.com); Ampersand sign from Amazon (www.amazon.co.uk)

COST

A similar kitchen would cost around £70,000