

essential

THE UK'S NUMBER 1 DECEMBER 2016 £4.25

KITCHEN

BATHROOM BEDROOM

ESSENTIAL
GUIDE
**HOME
HEATING**

A Sense of Occasion

*Gear up your kitchen for
entertaining this Christmas*



***Bathroom
DESIGN RULES***
AND HOW TO
BEND THEM

**BE OUR
GUEST**
GIVE YOUR SPARE
BEDROOM HOTEL CHIC
FOR THE HOLIDAYS

Real schemes

- *An urban retreat in South London*
- *Sleek new kitchen for a foodie family*
- *Bright and beautiful in a 1920s home*

Plus GIZZI ERSKINE | FESTIVE GIFTS | LUXE DINING | KARIM RASHID

Urban RETREAT

Natural wooden materials combine with Scandi design to create a bright, uplifting springboard for family life

PICTURES LIND AND CUMINGS DESIGN PHOTOGRAPHY | WORDS VICTORIA ROLISON



**GREAT
OUTDOORS**

Large bi-fold doors literally open the space up to the garden, inspired by the couples' years living in Spain where indoor furniture is pulled outside for the summer months





TIDY AWAY

Right: Ella loves her high-capacity larder cupboard which can also act as a breakfast station for the coffee machine, cereals and breadbin to be swept out of sight

TIMELESS TIMBER

Left: Wood materials feature heavily in this kitchen with cabinets made in a white pigmented oak which is less likely to turn orange over time



T

he problem with finding the perfect area to raise your family – we're talking outstanding schools, parks-a-plenty and great shops – is that, invariably, everyone else has too. Which is what happened when Ella and Valli Ardalan began looking for their forever home in the sought after 'Between The Commons' area of south London, so-called because it is nestled between Wandsworth and Clapham Common. 'Our priority was a school place for our eldest,' explains Ella. 'But it was very competitive which

meant our search area was reduced to just a couple of streets, and it became more about the location than the house itself.' While those streets were made up of beautiful terraces, many had been rented out for several decades and had fallen into a state of disrepair. 'We bought a shell which had been rented for 25 years with no work done to it in that time.'

Admitting this was a 'chunky' first big building project, the couple started work digging down into the basement to create a practical utility room, building up into the loft for a guestroom and extending to the side to create a large kitchen and dining area, with the small matter of replacing all of the internal walls and ceilings along the way. Pregnant with her third child, Ella recruited Nicola Hicks Designs, who recommended Sola Kitchens.

'We were hoping to create a Scandinavian look with the whole house and originally I wanted a classic Shaker kitchen while Valli wanted a more contemporary design,' explains Ella. 'Then we hit on the idea of going for one of Sola's modern Danish designs in a more natural colour scheme. This ended up being exactly what we wanted.'

For a couple who don't like clutter, efficient storage has been worked into every available inch of the clean white Form 6 cabinets, including a large pantry larder-come-breakfast station, cleverly concealing the cooker hood and fitting around the fridge-freezer.

Designer Skandium pendants define the cooking and dining zones, while the space has been kept purposely clear of bar stools and anything which might affect the flow of the kitchen. Wooden materials, white walls, plants and sunlight combine to create serenity.

'We practically live in the kitchen and wanted a space we could all relax in,' adds Ella. 'I never imagined it would look like this but it's actually ended up being exactly how we wanted it. It's a friendly, open place and we just love it.' **EKBB**

BOILER ROOM

By moving the boiler into a purpose built house in the garden, and relegating noisy white goods like the washing machine and tumble dryer to the basement, the space is kept clean and clear



'We wanted a space we could all relax in. I never imagined it would look like this but it's actually exactly how we wanted it. It's a friendly, open place'

**COOL
CONTRAST**

Super sleek Form 6 cabinets in crisp white offer storage up high and below in the main run, the perfect blank canvas to the interesting detail on the oak Form 1 island



SHINY CLEAN

Ella had wanted concrete worktops but decided on Kensho Silestone, a durable quartz which is concrete in tone but much easier to clean

Kitchen profile

A combination of two different designs from the Sola Kitchens Contemporary Collection; the island is made up of white stained oak Form 1 cabinets, while the main run is the ultra sleek Form 6 in crisp white. Worktops are Silestone in Kensho, a soft grey quartz which is easy to clean and very durable, while flooring is engineered oak.

SOLA KITCHENS

121 Munster Road, Fulham, SW6 6DH.
Tel 020 3004 0898. Also at 83 Heath Street, Hampstead, NW3 6UG.
Tel 020 3405 6799. solakitchens.com
Kitchens start from £35,000.



STEEL A MOMENT

With oak cabinets and flooring, Ella worried there would be too much wood so Nicola suggested a stainless steel skirting board to break the two materials up



HOT TOPIC

The PRO3 Fusion tap is both a boiling water and mixer tap – daily use means it’s really important to choose a tap with a good track record for maintenance, advises Rhiannon

NO REGRETS

The couple say they're glad they invested in bespoke electric windows which flood the dining area with natural light and close automatically at the first spot of rain





PEACEFUL PLACE

A beautiful mix of wood and white, stainless steel and soft grey, green house plants and a garden view all create the perfect Scandinavian palette

‘This is quite a classic, retro design in Denmark but because we haven’t seen it here it seems super modern and new. There is so much detailing’



RHIANNON PHENIS
SENIOR DESIGNER,
SOLA KITCHENS

What was your brief?

The couple have three children so it needed to be a busy family kitchen which would be nice and light and airy, with every inch of space utilised. In terms of style, Ella had hoped for a classic design originally, while Valli wanted contemporary so it was about meeting both of their needs without either of them having to compromise, to create a beautiful kitchen where everyone is happy.

How did you decide on the layout?

Our starting point was ensuring everything would be in the right place for

a family moving through the kitchen from morning to evening. By spreading things out a little we could find a space for every member of the family; the larder cupboard doubles as a breakfast station at the end of the main run, and the cooker has all the cutlery, utensils, pots, pans and plates in deep drawers around it, with the fridge-freezer at the other end. The sink isn’t right behind the cooker which means there’s space for someone at each place, with the dishwasher to the left and the wine fridge to the right, meaning it’s all ready to serve guests in the dining area.

Tell us about the Form 1 cabinets on the island...

This is quite a classic, retro design in Denmark but because we haven’t seen it here it’s super modern and new. It has so much detailing which immediately draws your eye; the wood finish is lovely, the detail of the slatting is wonderful without being too much, and the pigmented oak softens the look. It is expensive because each slat is essentially classed as a door, but it creates a really lovely feature piece for the island and works perfectly with the trend for having a different colour, finish or style.





Stockists

APPLIANCES

Professional deluxe 100 dual fuel white **oven**, £1,779, Rangemaster. Elica Sleek 80 built-in **cooker hood**, £499, John Lewis. RF540ADUSX4 ActiveSmart **fridge**, 900mm French door American-style with ice and water, 541L, £2,099, Fisher & Paykel. Similar W6131 Dual Zone **wine fridge** in stainless steel, £866, Caple. iQ500 SN66L080GB fully integrated **dishwasher**, from £489, Siemens. Accents 4-slice cream **toaster**, £49.99, Morphy Richards. Citiz **coffee machine** in white, £149, Magimix at Nespresso. Power white **Sodastream**, £149.99, Sodastream.

FIXTURES AND FURNISHINGS

Silestone Kensho **countertop**, price on application, The Marble Group. Blanco Andano 500-U sink, £384, Blanco. Tratti Tiers **wall tiles**, £183 per sq. m, Domus. Engineered oak overlay white mist pre-oiled **flooring**, £62 per sq. m, The Natural Wood Floor Co. Octo 4240 **pendant lamp**, £585 each, by Secto at Skandium. PRO3 Fusion round polished chrome **tap**, £1,150, Quooker. Bespoke handmade solid European Oak **dining table** with white spray-painted extension leaves, £4,680, and matching bespoke **bench**, £1,260, DOIG. Eames DSR **chairs** in white, £340 each, Charles and Ray Eames at The Conran Shop. Ludde **sheepskin**, £30, Ikea. **Jars** with bamboo lid, set of three in grey, £52, Bloomingville at Amazon. BSA Motorcycles 1930s **art poster print** SKU3654, £11.32, eBay. Black and White Scotch Whisky **poster**, £24.99, AllPosters.co.uk.

FOR STOCKISTS, SEE PAGE 150

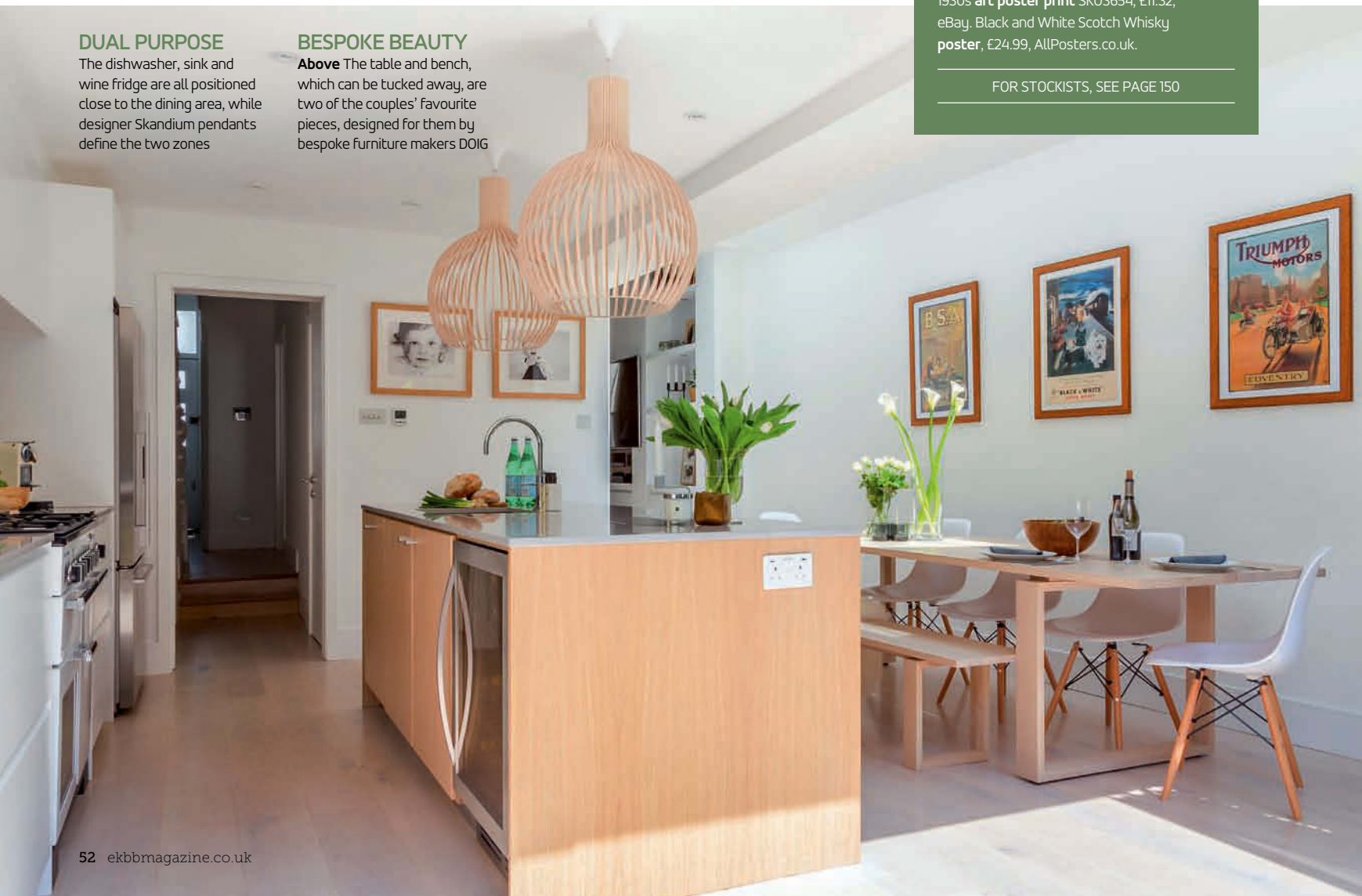
‘The couple have three children so it needed to be a busy family kitchen which would be light and airy’

DUAL PURPOSE

The dishwasher, sink and wine fridge are all positioned close to the dining area, while designer Skandium pendants define the two zones

BESPOKE BEAUTY

Above The table and bench, which can be tucked away, are two of the couples’ favourite pieces, designed for them by bespoke furniture makers DOIG





DESIGN DETAIL

The streamlined appearance of the Form 1 kitchen in smoked oak with copper worktop adds to its appeal. If you look closer you'll discover its hidden storage elements such as a shelf section which can be fully lowered down with the push of a button, into the worktop for a flush look. Also, the base units are designed as slim door fronts which can be connected to create drawers with different heights.

Bespoke Scandinavian kitchens by Sola Kitchens start from £35,000 for the Multiform ranges