

# *Pretty* PRACTICAL

Anne Sophie and Hakon followed both heart and mind to create a kitchen which would look good, work well and feel even better

PICTURES MIA LIND | WORDS VICTORIA ROLISON

## SPACE CREATION

Large sash windows replaced French doors to create more counter and cabinet space and a better flow to the kitchen layout. A colour scheme of white and grey plus marble and brass create a classic yet modern feel.



**ISLAND LOGIC**

The L-shape of the kitchen is mirrored by the central island, with deep drawers creating copious storage opposite the sink and Miele hob. Anne Sophie is thrilled with her Gaggenau ovens which sit alongside her fitted fridge, freezer and larder cupboards



*'It was essential that we lived here before working on the kitchen because it helped us to see what didn't work, and encouraged drastic changes'*

**T**his Norwegian couple bring both a love of functional, stylish interior design and a passion for cooking to the kitchen table. Which is why it was so important for Anne Sophie and husband Hakon to create a space which not only looked good, but which worked really well too. It was especially key after spending years darting back and forth in the existing kitchen of their South London Victorian home, explains Anne Sophie. 'The kitchen is a funny L-shape, which was badly planned. We had a set of double doors where the sink is now which ruined the flow and meant you could run a half marathon just cooking a meal,' she remembers. 'It was essential to us that we lived here before working on the kitchen because it helped to see what didn't work, and encouraged us to make some quite drastic changes.'

After meeting several kitchen designers, the couple decided the Scandinavian practicality of Sola Kitchens designer Pia Rosling was right on their wavelength. Pia suggested removing the double doors completely and moving the sink from the corner of the kitchen to a

central position under a large window, to create a better flow. 'We did worry we would miss the natural light but we soon realised it was the only way to make the space work,' says Anne Sophie. 'We've actually found we have just as much light and spend more time looking into the garden, because you don't tend to stand in front of a door and take in the view in the same way.'

While a top priority was a clever and practical layout, when it came to the look of her Scandinavian Shaker-style cabinets and central island, Anne Sophie followed her heart, knowing she wanted grey tones with brass handles and marble countertops. 'Every kitchen designer I spoke to discouraged the use of marble as a countertop because it stains and etches, so I was aware of the risk, but I do like that it's a living material which will create a patina with age. It makes me think of those old Italian kitchens which have been used for years and years and are almost lovelier for their layers of cooking.'

Now, after welcoming a new baby just a month after the kitchen was finished, this foodie haven certainly has all the design and warmth for family life. **EKBB**



**MIX & MATCH**

The grey oak floor adds gentle warmth to the scheme, and provides a nice contrast against the cool grey cabinetry



**PIA ROSLING**  
SENIOR DESIGNER,  
SOLA KITCHENS

**What was your brief?**

Anne Sophie and Hakon wanted a very Scandinavian style for their kitchen - the rest of their home mixes modern design in a Victorian property. We decided to give the shaker style of our Frillen kitchen a London look by foregoing lots of decorative cornices and details. They originally had double doors which were breaking up the flow of the kitchen, so a really practical layout was key as well as a central island and breakfast bar.

**Tell us about the island design.**

They originally had a kidney-shaped island and hoped for an updated version, but the room shape meant that at every angle there was a tight spot. By using high legs we created the illusion of space and a light, airy feel.

**How did you decide on the layout?** As you first walk in, you have tall cabinets to your right

which house the ovens, integrated fridge, freezer, larder and broom cupboard. To the left and leading into the dining area are more tall cabinets for crockery and glassware. The island has deep, high drawers opposite the hob and the sink, creating lots of storage for cutlery, ladles and utensils. Here the family can move easily between the sink, island and hob.

**What are your favourite design aspects?**

I love the island on its high-raised legs, with its lovely grey furniture. I really like the brass drop handles, knobs and cups and think that the marble worktop works really well too. Also, because the couple had several big appliances, such as a juicer and coffee machine, we created a space to tuck them away in countertop cabinets with glass panels at the top. We also fitted this unit with customised lighting which casts a glow on the kitchen.



**SECRET SILVER**

A double drawer in the island separates the everyday cutlery from the silverware



**BRASS BEAUTY**

The quirky addition of brass handles gives a unique feel to the Shaker-style cabinets



**WATER WORKS**

'With a young baby in the house the separate hot water tap has been well used,' says Anne Sophie

**Kitchen profile**

The Frillen kitchen from the Sola Kitchens Classic Collection is hand-painted in light grey with a variety of brass handles including antique knobs, cup handles and pull-swing handles to give a warm, quirky feel. These, combined with traditional Carrara marble worktops, create a characterful space which is filled to the brim with storage. New windows were fitted and the conservatory replaced by Eco Home Construction, with Good London Builders managing the project.

**SOLA KITCHENS**

121 Munster Road, London, SW6 6DH.  
Tel 020 3004 0898. solakitchens.com.  
Kitchens start from £25,000



**STYLISH SYMMETRY**

Tall cabinets on either side lead into the conservatory dining area giving the kitchen a clean symmetry, while practical appliances are all concealed from view

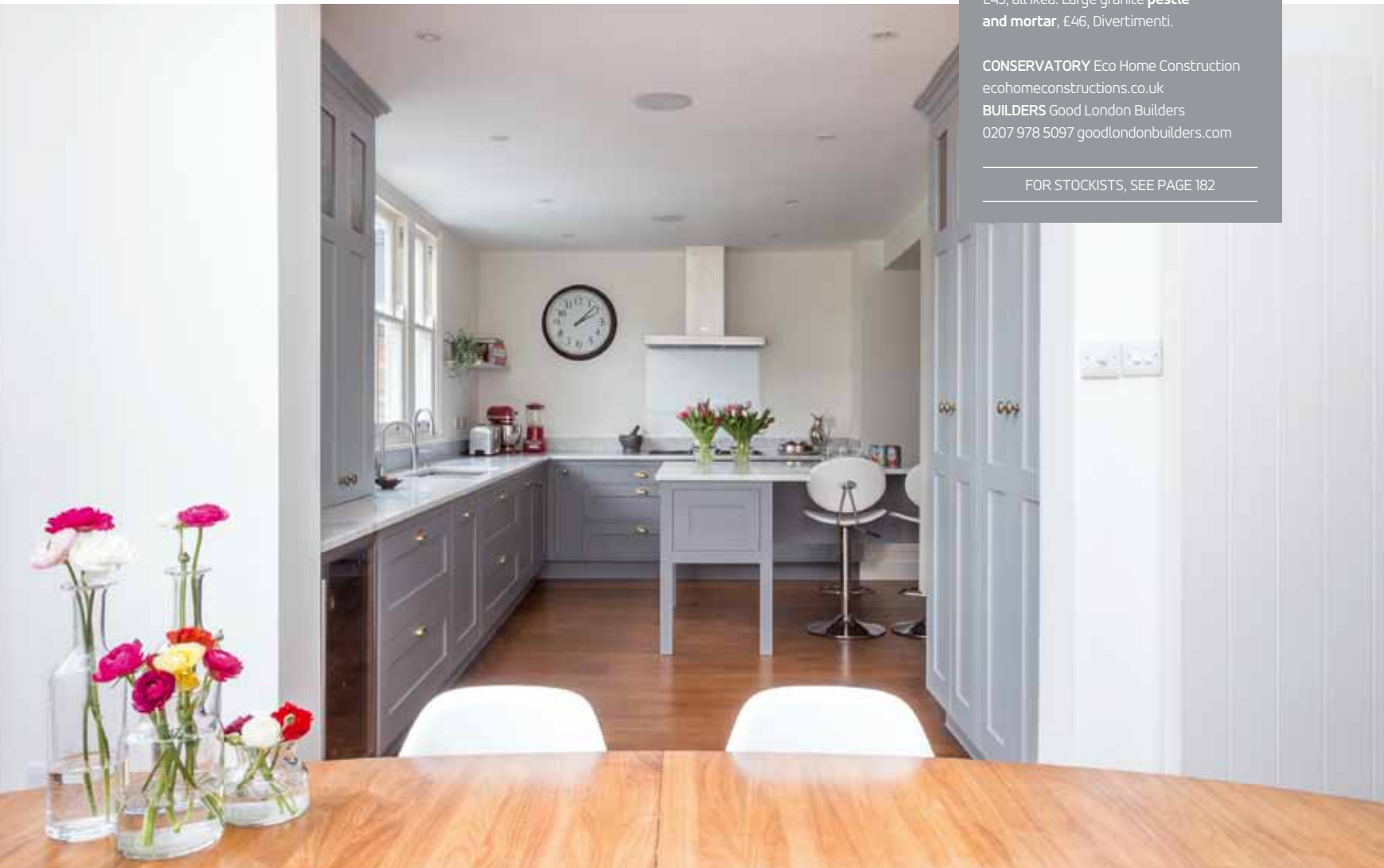


**SUNNY SPACE**

**Right** Anne Sophie and Hakon used their conservatory to create a sun-filled and stylish dining area, with a clever mix of high-end designer Danish furniture

**CLEAN LINES**

**Below** The couple wanted their kitchen to be timeless, in keeping with their Victorian house. By keeping one wall clear they created the illusion of extra space and the chance to incorporate a statement wall clock, floating shelf and glass splashback



**Stockists**

**APPLIANCES**

Similar BO 450 T11 single **oven**, £2,512; BS 470 T10 **steam combi oven**, £3,414; WS 461 T10 **warming drawer**, £740; GF T11 100 **filter**, £154, all Gaggenau. KM2354 **gas hob**, £1,250; Similar DA419-7 **cooker hood**, £1,025; Similar G6260 SCVi **dishwasher**, £1,150, all Miele. KIR81AF30G **fridge**, £778, GIN38A55GB **freezer**, £919, both Bosch. Evolution 200 **waste disposal**, £540, InSinkErator. Empire Red 4.8L KitchenAid Artisan **mixer**, £430 and **blender**, £140; Magimix two-slice vision **toaster**, £165; Nespresso 11370 Magimix Pixie Clips **coffee machine**, £140, all John Lewis. Similar 10+ red and silver digital **stereo system**, £219, Tivoli.

**FIXTURES AND FURNISHINGS**

KBX 160 55 20 **sink**, £505, Franke. Nordic round twin **taps** in brushed chrome with a PR03-VAQ tank, £1,310, Quooker. Similar Calligaris New York adjustable swivel **barstools**, £521 each, London Designer Furniture. Eames DSR **chairs**, £226 each, The Conran Shop. GM 2152 oval American walnut **dining table**, £6,000, Naver Collection at Wharfside. Foto **pendant lamps**, £18 each, and Bravur **wall clock**, £45, all Ikea. Large granite **pestle and mortar**, £46, Divertimenti.

**CONSERVATORY** Eco Home Construction [ecohomeconstructions.co.uk](http://ecohomeconstructions.co.uk)

**BUILDERS** Good London Builders  
0207 978 5097 [goodlondonbuilders.com](http://goodlondonbuilders.com)

FOR STOCKISTS, SEE PAGE 182