

Livingetc

JUNE 2018

THE HOMES MAGAZINE FOR MODERN LIVING

Livingetc

JUNE 2018 / £4.60 US \$9.99 / CAN \$10.99 / AUS \$9.99 / NZ \$11.50

summer SPACES

BRIGHT HOMES PACKED
WITH DAZZLING IDEAS

GARDEN ROOMS
Inspiring designs
for alfresco living

**MILITARY
PRECISION**
Royal blue, red and
white decorating looks

MODERN SCHEMES
HOW TO WORK WITH WHITE

TREND SPOT
Bugs and botanicals



SHOP FOR Freestanding basins, cocoon chairs, wood desks and pizza ovens

HOLLY'S HOUSE

Photography / James Merrell * Production / Mary Weaver * Words / Steven Efstathiou



The epic home of serial entrepreneur Holly Tucker is a fun-filled palace, bursting with quirky finds and offbeat buys, all centred around a faux olive tree planted in the kitchen

HOME PROFILE

THE OWNERS Holly Tucker, co-founder of Notonthehighstreet and founder of Holly & Co, her partner Frank Symington, who, when not helping with Holly's businesses, cooks for their shop and is a full-time dad to their son Harry, 13, plus Mr Mudley the dog.

THE PROPERTY A detached Victorian house in southwest London, with a hall, dining area, living room, playroom, Frank's study, a kitchen and cloakroom on the ground floor. On the first floor is the en-suite master bedroom, Harry's bedroom and bathroom and Holly's office. The second floor has two bedrooms, a spare room and a bathroom.

← FRONT DOOR

Holly's builder, Adam Paterson at jpateronbuilders.co.uk, demolished the partition walls in this former school entrance to create a large space with lots of light.

Get the look For a similar paint to that used for the doors and woodwork, try Farrow & Ball's Arsenic estate eggshell.

DINING AREA

In contrast to the ornate ceiling at the front of the house, the rear was relatively plain. 'We wanted to bring a different feel by using scaffolding boards,' says Holly.

Get the look Eurotiles & Bathrooms supplied the tumbled Noce Travertine floor tiles. The large factory shelving cart is by Andy Thornton. This is the glass-topped Last Supper console table by Anthony William Parry for Cappa E Spada. These are Habitat's Hester dining chairs.



PLAYROOM

'Harry is a massive, massive *Star Wars* fan,' says Holly. 'He's also been into Lego ever since he was a kid.'
Get the look The vintage Pepsi-Cola sign is from The Old Cinema. The bean bag is from BeanBagBazaar. The giant Lego storage box is from Store. This is the *Star Wars* Stormtrooper Battle Buddy figure from Tesco Direct. The Graffiti wallpaper is from Murals Wallpaper.



'This is my happy place – I can't get enough of renovating,'

says a smiling Holly Tucker. 'I don't have any other hobbies... I work, I'm a mum, a friend and a wife and I have my home. Because I'm so expressive, I have to live in what I love.'

And who couldn't help but adore this gorgeous Victorian gem in southwest London? Once a prep school, it's given Holly the perfect setting for indulging her love of artisanal pieces and offbeat artwork, all pulled together in a stylishly effortless fashion. Much like her career – Holly came up with the idea for Notonthehighstreet, before co-founding the online 'arts and crafts fair' with her business partner Sophie Cornish – it's an inspired mix of free-flowing creativity teamed with a hard-work ethic, then sprinkled with lashings of fun.

In particular, the house is full of the objects that Holly has helped in nurturing from the drawing board out into the retail world and, as she gleefully admits, it's an ever-growing collection. 'Once our old house was full (i.e. when my partner Frank had banned me from ever shopping again and doing what I do, that's quite difficult), we wanted to find our forever home,' Holly explains. 'This place is right by the river, we've got access to four acres of trust grounds along the bank and there's a listed Victorian lock that acts as a beautiful focal point at the back of the house. It's just ridiculously idyllic.'

Nevertheless, the original interior – a warren of darkened rooms – was hardly conducive to the open-plan lifestyle Holly, Frank and their teenage son Harry wanted. 'We lived here for two years before we started work,' says Holly. 'We knocked

through the downstairs rooms, demolished the garage in favour of a kitchen area and stripped out the fittings from all the bedrooms and bathrooms too.'

Crittall doors now open out to and enclose the living area and the new kitchen has an airy feel, with its lofty ceiling and enormous island, but this is no 'modern-meets-classic' refurb, but rather an individual space that is as welcoming as it is jaw-droppingly gorgeous. 'I'm into raw materials and nature,' says Holly, 'so the look is all about stone and wood – tactile and textured materials – and lots of animals. The whole thing had to be fun. Our builder, Adam Paterson, is open to taking on a creative brief, so whether it was putting up scaffolding boards on the ceiling or telling him that I needed a flamingo loo, he was willing to explore ideas that are out of the ordinary.'

Most extraordinary of all is the faux olive tree in the kitchen, which seems to have taken root within the Corian-clad island. 'I knew we had to have one in the house,' says Holly, whose previous home was called Olive House, and both she and Frank, who's a keen chef, are fans of *Olive* magazine. 'It took eight burly chaps to heave it into place, as it weighs hundreds of kilos and that was only after they got it through the front door, which at one point seemed impossible,' Holly recalls. 'It was a nightmare...'

Still, there it now serenely sits, spreading its good vibes. And while the renovation took place, Holly also launched a new venture called Holly & Co – a shop-cum-coffee bar near the house, which also acts as an advice centre for small businesses. 'I'm still involved with Notonthehighstreet, but with Holly & Co, I'm taking a new journey where I'd like to help small businesses grow in an organic fashion,' Holly explains. Like her home, it's certain to be a fun way of stretching the mind and exploring the art of the possible. Holly will be launching her new podcast Holly & Co-mpany in May and tickets to her first creative events for small businesses go on sale in June.

Learn more at holly.co. Holly's house is available as a location via shootfactory.co.uk

HOMES / ETC

LIVING AREA

'I designed the sofa myself, by merging the look of two different styles I particularly liked,' says Holly.
Get the look For a similar velvet fabric to that used on the sofa, try Clarke & Clarke. The bird feather coffee table is by Anthony William Parry for Cappa E Spada. The walls are painted in Farrow & Ball's Chappell Green estate emulsion. The beaded moose skull is by Daisy Harkness at Denim and Bone.

STAIRWELL

'I bought the La Volière pendant because it reminds me of my first-ever purchase for my home,' says Holly. 'I could just about afford the table lamp back then.'
Get the look This is the La Volière pendant light by Mathieu Chailières at The Conran Shop. YES Glazing Solutions supplied the Crittall doors. The faux flamingos were found at The Red Dot Gallery.



HOMES / ETC



KITCHEN ↑
'We get two fridge magnets from every place we visit,' says Holly. 'One has to be a good 'un, the other one naff...'
Get the look The vintage locker is from The Old Cinema. The personalised basket is by Marmaduke London at Notonthehighstreet. This is the factory cart sofa by Andy Thornton. The cushion is from Amnesty Shop.

KITCHEN DETAIL →
'The painted breadboard is by artist Alex Ebdon – this is a new business venture that I'm creating for him,' says Holly.
Get the look To learn more about Alex Ebdon's work, visit alexebdon.com. The Esteril Siusi faux-timber porcelain flooring is from Eurotiles & Bathrooms.



'The kitchen had to be open and not look like a kitchen (I hate anything that looks like it's supposed to). This space is creative and full of artwork'

KITCHEN

LED lighting was cleverly incorporated into the apex of the roof, thus accentuating the height of this new space that replaced the old garage.
Get the look The bespoke cabinetry by Sola Kitchens features Corian worksurfaces and antique mirror-glass panels on the island. The island's bespoke legs (matching the legs of the bar chairs) are by Adam Paterson at jpatersonbuilders.co.uk. These are Hauteville concrete bar chairs by Lyon Beton at Rockett St George. The felt Corn Flakes packet and other felt produce on the shelving is from The Felt Cornershop collection by Lucy Sparrow at sewyoursoul.co.uk.





MASTER BEDROOM

'None of our beds have headboards or legs as I don't enjoy the formulaic structure,' says Holly. 'I wanted something more creative, so I've designed my own.'

Get the look The scaffold board bed was made by Adam Paterson. This is the Kubu pendant by Dutchbone. The Mexicana cushions are by Graham and Green. This is the Sunburst Rattan Mirror by The Forest & Co at Notonthehighstreet.

CLOAKROOM

'I've got a thing about flamingos... so the whole cloakroom was designed around them,' says Holly.

Get the look The flamingo was an eBay find. This is Flamingo Club wallpaper by Matthew Williamson at Osborne & Little. The basin is from Hampton Bathrooms.

HOME TRUTHS

A walk on the towpath or a stroll in the park?

Towpath - I take Mr Mudley out for a walk every morning when I listen to a podcast and have the Thames to myself. That's where I get my best ideas.

City break or beach? Going through the lanes of any city is my favourite thing. Shops, shops, shops... I take pictures, talk to shop owners and inevitably come back with an extra suitcase. Frank hates it!

What do you like to do abroad that you can't do at home? Shop the independents. I find it almost impossible to do the same in this country now...

It's one of my missions in life to turn that around.

What won't you leave the house without? An

Anya Hindmarch handbag with my notebook and Mr Mudley - he comes to work with me.

What's the first thing you do when you get back?

Get into my pyjamas and give Harry a big cuddle.

What's your abiding mantra? Be the fullest version of yourself that you can.

GUEST BEDROOM

'I love Jane Rickett and Lucy St George at Rickett St George - I think they've done an amazing job in interiors,' says Holly.

Get the look The framed feather wings are by Rickett St George. The walls are painted in Farrow & Ball's Hague Blue estate emulsion.

HOMES/ETC

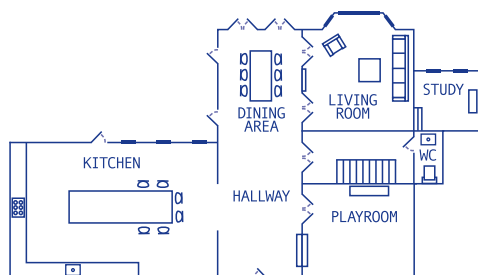


TERRACE

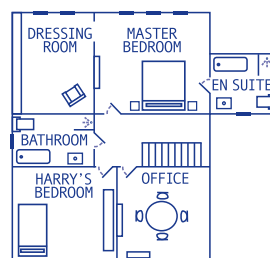
A large terrace runs around the rear of the house – once used for a scene in the film *The French Lieutenant's Woman* – and includes this unusual seating zone.

Get the look The grass furniture is by Artificial Landscapes at Notonthehighstreet. This is the Original 1227 floor lamp by Anglepoise. The coffee tables are from La Redoute. The ornamental pig is from Wyevale Garden Centres. The floor cushion is by The Forest & Co at Notonthehighstreet.

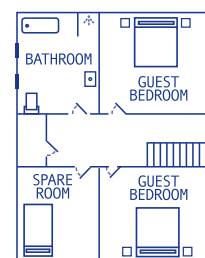
THE BLUEPRINT



GROUND FLOOR



FIRST FLOOR



SECOND FLOOR

